

# NOW AVAILABLE!

# HAMILTON

# AUTOCASHIER



**BUILT *for* YOU**  
**Product Data and Specification**

***THE GOLD LINE***<sup>®</sup>  
*By Hamilton*

# Built for You



*In an increasingly complex world, Hamilton Manufacturing just simplified the life of the car wash operator. Hamilton's new Gold Line® Autocashiers give you all the options you've been looking for. It's a simple concept based on simple addition. Add as many features as you need. No more extraneous items. No more trying to guess what you'll need for the future. Plenty of possibilities to grow your equipment with your business.*

How does it work? You start with Hamilton's sturdy basic unit that includes:

- Hamilton STA Validator with Tokenote® acceptance
- Two coin acceptors
- One stainless steel Hopper (\$800 quarters)
- Four wash select buttons
- Instructional LED display
- Automated voice announcements
- Proximity sensor
- Environmental control unit
- Low voltage door wiring
- New diagnostic panel
- Newly designed relay panel (ground fault circuit interrupter, out-of-service relay, cycle inhibit relay and four wash relays)
- Easy programming through the wash select buttons
- Adaptable door design
- Universal harnessing for ease of adding options

And that's not all. Hamilton Gold Line® Autocashiers are easy to service and easily adaptable. When you're ready to add options, we're ready for you. Hamilton will provide you with a kit that includes easy-to-follow instructions. You can choose from a variety of bill acceptors and coin acceptors. If you'd like, you can add our credit card acceptor, receipt printer option, lighted stainless steel hood assembly, lighted interactive display, or the new Hamilton Code Systems. It's all up to you.

When it comes to service and maintenance, Hamilton couldn't have made it any simpler. In most cases, all you have to do to service a Hamilton product is remove and replace a part. Usually in a matter of minutes.

At Hamilton, it's all about choice. We offer our customers one of the most versatile paystations around. That translates into more options, more long-term savings, and greater ease of operation.



**Choice of Validators**

**NEW**

**Hamilton STA or XE Coinco®, Mars® or CashCode®**

Now you can choose the Validator that is right for you. The Hamilton STA offers the latest technology, Tokenote® acceptance, improved acceptance for currency and enhanced security. Hamilton is proud to welcome Coinco®, Mars® and CashCode® Validators to its family of quality products. These Validators are upstack bill acceptors that have received very positive reviews from car wash operators. In addition, the CashCode® Validator can be used for foreign currency.

You can interchange any of the above mentioned bill acceptors, simply by changing mounting brackets.

**THE GOLD LINE®**  
By Hamilton



**Choice of  
Coin Acceptors**



**Slugbuster® or IDX®**

The Slugbuster® coin mechs are single coin accepting units that have been a staple in the Hamilton ACW for years. With the recent introduction of the Golden Dollar coin and the number of options an operator may have for coin acceptance, Hamilton has worked with IDX® on a special version of their coin mech.



**Thermal Receipt Printer**



For customers who need a receipt, Hamilton now offers a receipt printer for credit card and/or cash purchases. The printer can also be used for printing the audit reports from the ACW.

The printer uses high temperature thermal paper. The paper is chemically treated for optimum performance and sharp, bright imaging. Check the manual for specifications on installation and ordering of paper.



**Credit Card  
Acceptance**

Hamilton's Autocashiers offer the option of credit card acceptance, making payment easier for the customer and operator alike. The credit card acceptor includes a built-in computer and software system to handle major credit cards at the automatic bay. Installation requires a dedicated phone line and credit card processing using the Vital® network.



**Lighted Stainless Steel  
Hood Assembly and  
Lighted Interactive Display/  
Brick Mount Display**

In locations such as a convenience store where the owner may want to mount their machine as a "free standing" unit, Hamilton offers a durable stainless steel hood enclosure that can be used with or without a lighted interactive display. Without the interactive display, the hood can be used as a form of advertisement with a company logo or statement.

The interactive display can be programmed with a special greeting when the customer pulls up to the ACW. When the customer interacts with the machine, the interactive display will mimic the main controller display and walk the customer through the transaction process. Hamilton also offers a "brick mount" version of the interactive display that is intended for use at locations where the ACW is mounted in a brick enclosure. The display works the same in this scenario as in the stainless steel hood.



*Shown with optional hood and base.*

*Our Autocashiers recognize new and old US currency,  
and can be configured to accept and dispense the new Golden Dollar coin.*



# 6



**Gold Line® POS Systems –  
HCS 3 or HCS 4**

**NEW**

The Hamilton Code Systems are point of sale systems that allow you to sell car washes from the gas pump; inside the convenience store or at the Autocashier. System 3 is designed for an application where the store, gas pumps and car wash are all at the same location. System 4 allows remote sales of car wash codes. This gives you the ability to sell wash codes from up to 10 different locations via a remote POS, to be redeemed at one car wash location.

Hamilton Code Systems offer your customers a variety of convenient ways to purchase a car wash and save time on their transactions.

Another choice for a Point of Sale system is the POS 4000 with pay at the pump capabilities.

# 7



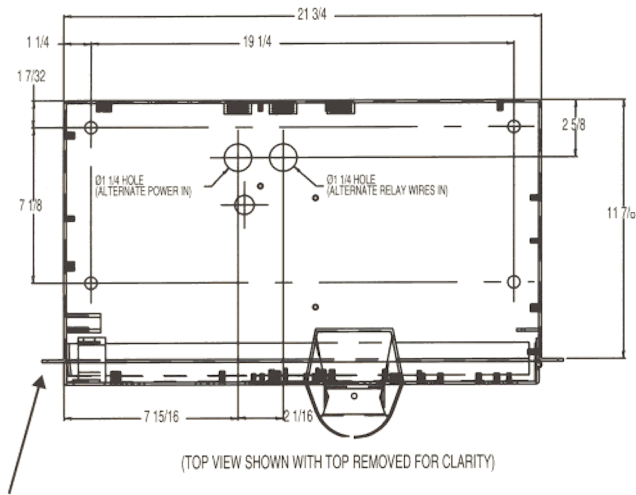
**Tokenote® Acceptance with  
Hamilton Validators Only**

The Hamilton Tokenote® accepting Autocashiers will provide the basis for a long term, highly profitable marketing program. The Tokenote®, when given to a customer, will provide a monetary benefit and create customer loyalty to your facility.

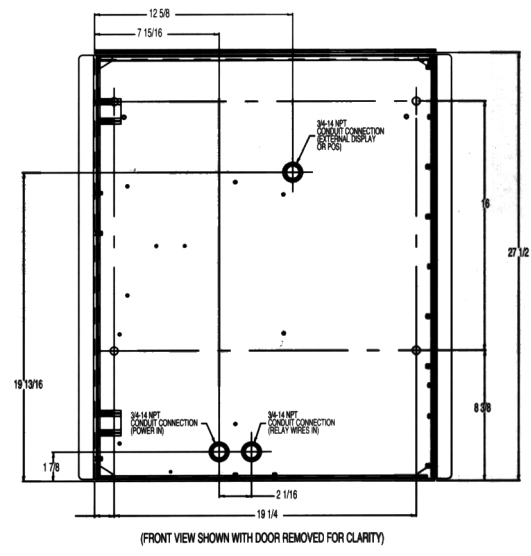
The Gold Line® ACW now gives you the ability to accept Tokenotes® for a specific wash.

Custom artwork can be supplied to Hamilton for the custom imprint, which could include company logos and special ink colors. They are also offered in colored paper that could be used for special promotions.

The Tokenote® can be used and re-used, they are securely and uniquely encoded and can be verified in any Tokenote® accepting ACW. The ACW will recognize 15 different Tokenote® codes with up to 5 different values. This provides unlimited promotional potential.



\* Flange extends 1" from edge of cabinet.  
 NOTE: Specifications on drawing subject to change.



**FEATURES**

- Hamilton STA Validator with Tokenote® Acceptance
- Accepts all new and old U.S. currency
- Accepts quarters, tokens or Golden Dollar coins
- Instructional LED Display
- Automated Voice Announcements
- Proximity Sensor
- Environmental Control Unit
- Low Voltage Door Wiring
- Universal Door designed for future add on options
- Hopper Base swivels and tilts
- Universal Harnessing and Heavy Duty Transformer for future add on options
- Enhanced Diagnostics Panel

**SPECIFICATIONS**

Cabinet: .....10 gauge stainless steel  
 Hopper: .....Hamilton \$800 quarter capacity  
 Power: .....110 VAC, 60 Hz  
 Door Voltage: .....24 VAC, DC  
 Locks: .....2 heavy duty Medeco® plug locks  
 Weight: .....200 lbs. (approx.)

**CABINET DIMENSIONS**

27 1/2"H, 21 3/4"W, 11 7/8"D  
 69.9cm H, 55.2cm W, 30.2cm D

**AVAILABLE OPTIONS\***

- Currency Acceptors: Hamilton XE, Coinco®, Mars® or CashCode® (for U.S. or foreign currency) Validators
- Coin Acceptors: Slugbuster® or IDX®
- Credit Card Acceptance
- Hand-held Thermal Printer
- Hamilton Code Systems 3 or 4
- Single \$1000 Bill Stacker with Hamilton Validator only
- Tokenote® Acceptance with Hamilton Validator only
- Lighted Stainless Steel Hood Assembly
- Interactive Display, Hood or Brick Mount
- Stainless Steel Rectangular Base 20" or 26"
- Carbon Steel Pedestal Base 20" or 26"
- Stainless Steel Buttons
- Custom Voice Announcements
- Thermal Receipt Printer
- External Interface Controller
- POS 4000 with Pay-at-Pump

\* Further developments are being made to provide an even greater variety of options to these and other systems.



**OPTIONAL BASES**

*Your choice of validators and coin acceptors is an important first in Hamilton's history of service!  
 Our Gold Line®'s enhanced choices allow you to offer your customers better products and services.*

**Hamilton Mfg. Corp.**

Subject to change without notice.

Form # GLACW/2002-08

1026 Hamilton Dr. • Holland, Ohio 43528  
 Service: 800-837-5561 • Sales: 888-723-4858  
 419-867-4858 • Fax: 419-867-4850  
<http://www.hamiltonmfg.com>